

PRODUCT DESCRIPTION

The Solatube SkyVault Series is a groundbreaking line of modular, high output tubular daylighting devices that deliver massive amounts of daylight to large volume spaces with high, open ceilings. This gives building designers a daylighting solution that provides maximum output while minimizing impact on the building envelope and significantly reducing installation costs.

KEY BENEFITS

- More light: Solatube's advanced optics mean more light is collected when you need it from early morning to late afternoon.
- Immense spaces: Taking the technology even further, the SkyVault series can light the largest of spaces right up to ceiling heights 15m+.
- Dimmable: Reclaim the space, the light doesn't have to be on all the time with our daylight dimmer options.
- Targeted: In those large spaces sometimes there are places that need more light than others - that's where the amplifier comes in for specific directed light.

APPLICATIONS

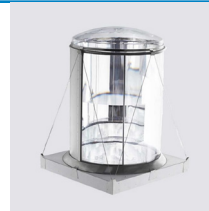
This system is suitable, but not limited to the following areas:

- Open ceilings
- Extra large spaces
- Warehouse and industrial, retail spaces, hospitality, convention centres, airports

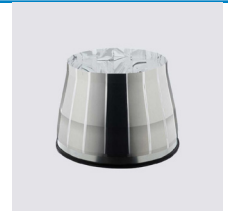
PRODUCT COMPLIANCE

- B2, E2, F2, G7 and H1
- ISO 9001
- AS 4285

ACCESSORIES



SkyVault collector



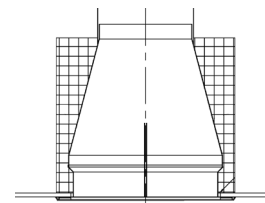
SkyVault series amplifier



0-10V dimmer



Thermal insulation panel



Fire damper
(on request)

SPECIFICATIONS

Recommended Maximum Tube Run:	30m (indicative only)
Diameter:	742mm
Recommended Maximum Ceiling Height:	5.5-30m
Minimum Roof Space:	Open
R Value (NFRC):	0.12-0.43 *with thermal insulation panel
Wind Zone:	Very high
Flashing Available:	All top assemblies are supplied pre-assembled on a curb-mounted flashing.
Dome Technology:	UV and impact resistant Raybender HD technology (Collector) Light tracker reflector (Collector) Vacuum formed polycarbonate Outer dome w/ PETG inner dome
Tube Technology:	Spectralight infinity tubing
Reflectance:	99.7%

LIMITATIONS

- SkyVault comes with a standard curb flashing, upstand must be supplied by builder.
- Only suitable for open ceiling applications.
- For installations including amplifier a mobile work platform is required to assist with assembly.
- Collector is a non-stock item and should be ordered in advance to allow for international shipping.

INSTALLATION TO BE CARRIED OUT BY AUTHORISED HOMETECH INSTALLER

- All products shall be installed by a single installer with demonstrated experience as approved by Hometech, with adequate equipment, skilled workers, and practical experience to meet the project schedule.
- Coordinate between at least the following trades: Main contractor, roofing and (when dimmer specified) electrical. (Where specified) Electrical to wire components and program lighting controls.
- Install flashing to produce weatherproof seal.
- Provide thermal isolation when components penetrate or disrupt building insulation. Pack fibrous insulation in rough opening to maintain continuity of thermal barriers.
- Coordinate attachment and seal of perimeter air and vapor barrier material.
- Where metal surfaces of tubular unit skylights will contact incompatible metal or corrosive substrates, including preservative-treated wood, provide permanent separation as recommended by manufacturer.
- Align device free of warp or twist, maintain dimensional tolerances.
- Test each fixture to verify operation, control functions, and performance. Correct deficiencies.

WARRANTY (SEE WARRANTY DETAILS FOR MORE INFORMATION)

- 10 Years LEAK PROOF GUARANTEE
- 10 Years for materials and workmanship
- 5 Years for accessories

CAD DRAWING (FURTHER VARIATIONS AVAILABLE ON THE WEBSITE)

